



Power Points

www.diversepower.com

FEBRUARY 2015



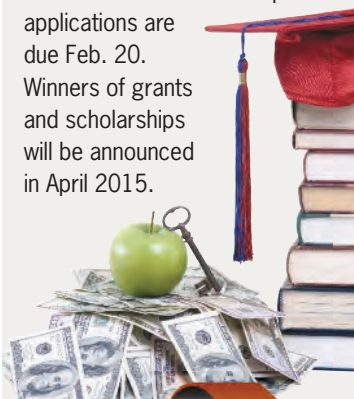
A Touchstone Energy® Cooperative 

*Innovation through vision.
Quality through service.*

Opposing EPA regulations: Electric co-op members make their voices heard

Last call!

Diverse Power Foundation grant and scholarship applications are available at www.dpfi.org or by contacting Ken Pope at (706) 845-2000, ext. 347, or (800) 845-8362. Scholarship applications are also available in school counselors' offices. Send completed scholarship and grant applications to Diverse Power Foundation, Attn. Ken Pope, P.O. Box 160, LaGrange, GA 30241. Grant applications are due Feb. 6 and scholarship applications are due Feb. 20. Winners of grants and scholarships will be announced in April 2015.



Inside:

- A Word from Wayne Page 14B
- WYT deadline Page 14B
- Restoring power Page 14C
- Co-op Connections Card Page 14D

Almost 36,000 comments from members of Georgia's electric cooperatives, including Diverse Power, were recently submitted to the Environmental Protection Agency (EPA) in opposition to the agency's proposal to limit carbon dioxide emissions from new and existing power plants. The comments were made through the *Action.coop* and *TellEPA.com* websites through Dec. 1, 2014.

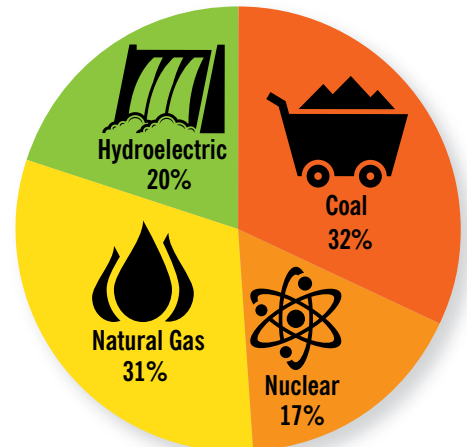
The comments from Georgia electric cooperative members combined with more than 1 million comments submitted to the EPA by co-op members throughout the nation opposing the rule regulating new power plants. In total, almost 1.2 million comments were made from concerned members of the nation's electric cooperatives.

"Our top priority is keeping electric bills affordable for our members," says Diverse Power President/CEO Wayne Livingston. "Unfortunately, the bureaucrats in Washington, D.C., didn't consider the impact this latest proposal would have on prices and the real-world impact it would have on the budgets of families and businesses across America."

Diverse Power receives 32 percent of its electricity from coal, according to Livingston.

"These latest regulations from the EPA might mean we have to shut down our most affordable source of power," he says. "That's why tens of

Diverse Power's fuel mix



thousands of electric cooperative members from throughout the country told the EPA that we cannot afford the continual stream of regulations."

Livingston assures Diverse Power members that it is possible to deliver electricity while balancing affordability and environmental stewardship—but not under the latest rules.

"Coal is a low-cost, safe, secure and domestic energy resource that ensures the reliable 24/7 power people depend on," says Livingston. "We cannot afford to cut coal out of our fuel mix."

Diverse Power participated in a nationwide effort among electric cooperatives that collectively submitted more than 1 million comments to the EPA opposing new regulations for new and existing power plants.

Diverse Power Incorporated, an
Electric Membership Corporation

Diverse Power Inc.
P.O. Box 160
1400 South Davis Road
LaGrange, Georgia 30241
(706) 845-2000
(800) 845-8362

Diverse Power Inc., Pataula District
P. O. Box 289
413 Blakely Street
Cuthbert, GA 39840
(229) 732-3171
(800) 845-8362

www.diversepower.com
www.arcofadventure.com

Board of Directors

Chairman

Dr. Bill Couch

Vice Chairman

David Murphy

Secretary

Jimmy Bailey

Larry Keith

Charles Knight

Harrell Landreth

Cheryl G. Meadows

Roy Tollerson Jr.

Richard Williams

Larry Williamson

Staff

Wayne Livingston

President/CEO

Lisa Booth

Executive Assistant

Randy Pruett

Senior Vice President/COO

Wade F. Hall

Senior Vice President/CFO

Randy Shepard

Senior Vice President/CTO

Wendell Cox

Customer Service Manager

Ken Pope

Marketing Coordinator

Scott Sawyer

Marketing Services Coordinator

Diverse Power Incorporated provides electric-
ity and related services to almost 35,000
meters on 5,500 miles of power lines in
Troup, Harris, Meriwether, Heard, Muscogee,
Coweta, Calhoun, Clay, Quitman, Randolph,
Early, Stewart and Terrell counties in Georgia
and Chambers County, Ala.

Power Points is the official news-
letter of Diverse Power Incorporated and
is distributed monthly to all its members.

Jackie Kennedy, Editor
jackiekennedy8899@yahoo.com

A Word from Wayne

EPA rule impossible to implement

If the Environmental Protection Agency's (EPA) latest proposal to limit carbon dioxide emissions at power plants is approved, our cost for power will skyrocket. And that means the price you pay for electricity would rise, too.

More than a million members of electric cooperatives across the nation have expressed their opposition to the overreaching proposals by sharing comments and concerns with the EPA. We are proud that almost 36,000 of those comments came from members of electric cooperatives in Georgia.

In its official comments, the National Rural Electric Cooperative Association (NRECA), which represents the nation's 900-plus electric cooperatives providing power to 42 million people, calls the EPA's proposed rules "illegal, imprudent and impossible to implement."

The NRECA goes on to say: "EPA's aggressive approach to interpreting the statute, complete inconsistency with its own longstanding regulations and misinformed statements and Pollyannaish judgments about the electricity sector and what the emission reductions sources in that sector can actually achieve, place the rule beyond salvage. These comments explore these infirmities in detail and

explain why EPA must withdraw this ill-advised proposal and start over."

Jo Ann Emerson, CEO of NRECA, adds: "The EPA proposal asks consumers to pay more for energy and use less of it. This approach raises serious consequences for millions of Americans in rural, high-cost or low-income areas. Affordable, reliable energy is the lifeblood of every household, every business and every community in the country, so the member-owners of electric cooperatives view this plan with obvious concern. It is complex, it is costly and it is a staggering overreach of authority. That's why NRECA joins with co-op advocates who submitted more than 1.1 million grassroots comments to EPA asking for the withdrawal of these proposals on new and existing power plants. We stand ready to work with the EPA and others to create policies promoting an 'all of the above approach' that are environmentally and economically responsible."

Bottom line, we can't afford, and you can't afford, to cut coal out of our fuel mix. If you haven't already done so, let your local, state and national representatives know that.



Wayne Livingston
President/CEO

This Month

Three high school students will take the tour of a lifetime this summer when they embark on the 2015 Washington Youth Tour set for June 11-18. Sponsored by the nation's electric cooperatives, including Diverse Power, the tour gives young people the opportunity to see government in action, fostering their desire to engage in civic and governmental activities. Any high school student living in the counties served by Diverse Power may apply for this annual leadership tour. To obtain an application, visit your high school counselor or contact Ken Pope at Diverse Power at (706) 845-2000, ext. 347. The deadline for submitting applications is Feb. 27. Winners will be announced in April.

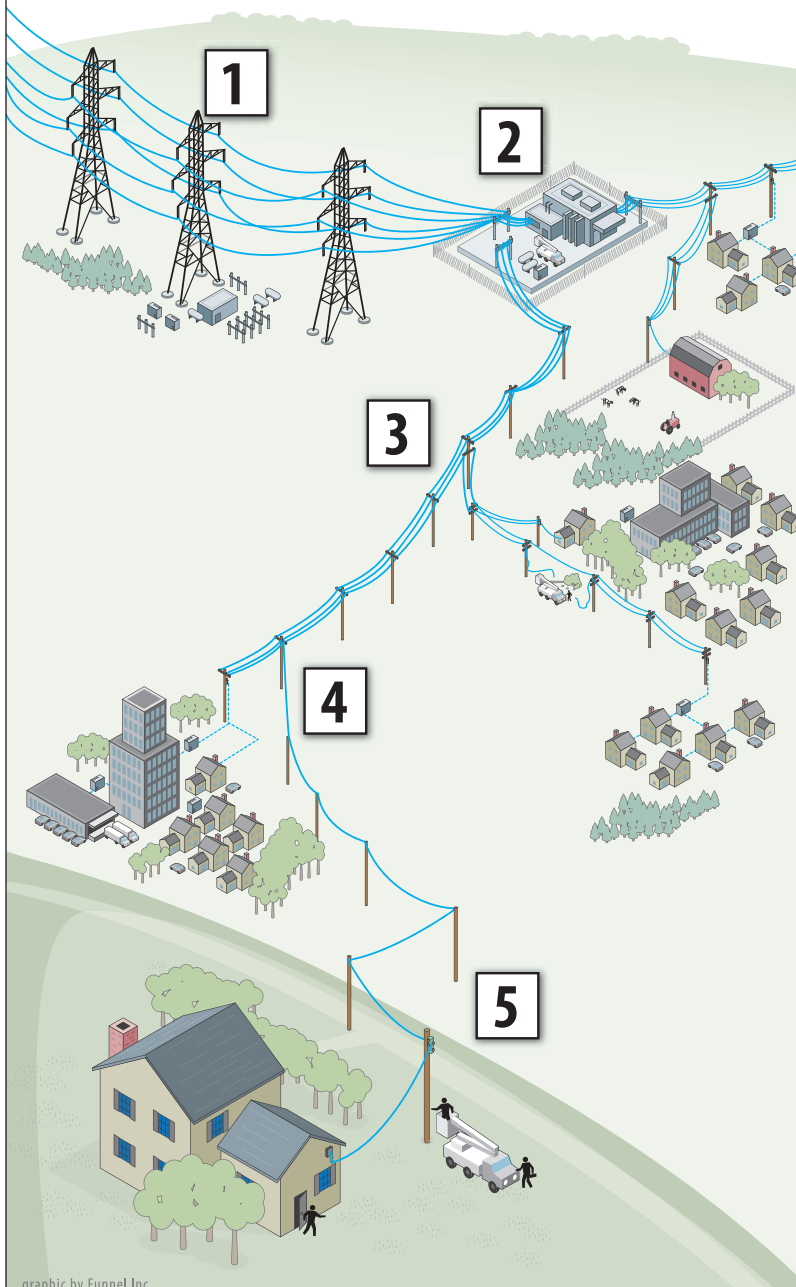


How we restore your power

Inevitably, winter storms or spring tornadoes sometimes damage the electricity distribution system, leaving you without power. At these times, our No. 1 goal is to get your lights back on. To do that, we start with the most crucial components of the electric grid and work our way out to individual neighborhoods and homes, as illustrated here.

Our internal communications systems alert us automatically when the power is out, but to assure we know your situation, contact us at (706) 845-2000 to report an outage. Use our mobile outage reporting system to report outages from your mobile devices and stay informed of where outages are in your community.

And don't forget, we're taking these steps to restore your power promptly, safely and efficiently after storms.



graphic by Funnel Inc.

1 High-Voltage Transmission Lines

Transmission towers and cables that supply power to transmission substations (and thousands of members) rarely fail. But when damaged, these facilities must be repaired before other parts of the system can operate.

2 Distribution Substation

Each substation serves hundreds or thousands of members. When a major outage occurs, line crews inspect substations to determine if problems stem from transmission lines feeding into the substation, from the substation itself, or if problems exist down the line.

3 Main Distribution Lines

If the problem cannot be isolated at a distribution substation, distribution lines are checked. These lines carry power to large groups of members in communities or housing developments.

4 Tap Lines

If local outages persist, supply lines, called tap lines, are inspected. These lines deliver power to transformers, either mounted on poles or placed on pads for underground service, outside businesses, schools and homes.

5 Individual Homes

If your home remains without power, the service line between a transformer and your residence may need to be repaired. Always call to report an outage to help line crews isolate local issues.

Community Connections

Awards mark 425 years of service

Diverse Power President/CEO Wayne Livingston recently presented service awards to 24 Diverse Power employees, honoring them for

a combined 425 years of service. The employees were recognized at the annual Employee Celebration Luncheon on Dec. 18.



Diverse Power employees receiving awards for the most years of service were, from left, Ellen McMillian, 25 years; Randy Shepard, 25 years; Randy Pruett, 30 years; Al Clark, 35 years; Debbie Duncan, 30 years; Robert Alford, 35 years; and Randy Norris, 40 years.



Receiving service awards for 15 and 20 years at Diverse Power were, from left, Jim Owen, 15 years; Emiley Boatner, 20 years; Michael Kitchens, 15 years; Sherri King, 15 years; Ted Chapman, 20 years; Tonya McGraw, 15 years; Kakeya Gilbert, 15 years; Katie Miliner, 15 years; and Lee Bridges, 15 years.



Eight employees were honored for five and 10 years of service, including, from left, Shawn Bailey, 10 years; Dennis Harrison, five years; Lisa Booth, five years; Taylor Roland, five years; Ben Bowles, 10 years; Devin Heleski, five years; and Jeremy Mowery, 10 years. (Not pictured: Rick Floyd, 10 years.)

Use Co-op Connections Card for savings

Approximately 100 area businesses participate in Diverse Power's Co-op Connections® Card program, which offers money-saving deals to our members and increased business to our partners. There is no cost to businesses to participate in the program.



To learn how your business can become a Co-op Connections Card partner, contact Residential Services/Marketing Coordinator Ken Pope at (706) 845-2000, ext. 347. To view a complete listing of our Co-op Connections Card deals, visit our website at diversepower.com.

Some of our Co-op Connections Card deals are listed here:

Health and Fitness

Beall Dental Center

LaGrange, Ga. 706-882-2597
5% off all services paid in full at time of service.

Crossroad Counseling, LLC

LaGrange, Ga. 706-884-4183
10% off first visit.

Fred Jenkins, LLC (rolfing)

LaGrange, Ga. 706-884-4121
10% off first visit.

Lakeside Fitness and Therapy

LaGrange, Ga. 706-594-6632
For first-time training clients/therapy patients—
15% off first 5 hours training or therapy session
package. Includes free consultation/assessment.

Nia's Way

LaGrange, Ga. 706-884-4183
10% off first visit.

Dr. Charles Pitts, DMD

LaGrange, Ga. 706-882-0591
Free Panorex X-ray (\$115 value).

Towne Fitness Club

LaGrange, Ga. 706-884-4653
Free enrollment with a two-year membership.

Vision World Inc.

LaGrange, Ga. 706-882-8841
10% off glasses.