

Diverse Power tower-climbing crew aims high

BY JACKIE KENNEDY

In an ongoing effort to reduce costs to consumers, Diverse Power Incorporated (DPI) recently began installing its own fiber-optic cable, significantly cutting costs associated with contracting out this task.

According to Safety Coordinator Glenn

Cunningham, a newly formed tower-climbing crew, consisting of six Diverse Power linemen, has been trained to perform duties previously handled by contractors. The crew specializes in climbing high-rise towers to install/remove antennas and fiber-optic cable.

"In the future, as wireless technologies advance, having certified tower climbers will be very advantageous to Diverse Power," says DPI Senior Vice President Randy Pruett.

Members of Diverse Power's tower-climbing crew include Steve Rhode, Mike Hammond, Dennis Harrison, Brent Bailey, Brannon Horne and Cunningham.

While Diverse Power's electric distribution linemen have ample experience in climbing poles up to 60 feet tall, the communications towers are 350 feet tall.

"This is a whole new thing," says Cunningham. "Bucket trucks won't reach that high, so the only way to get up there is to climb."

A Colorado-based company traveled to LaGrange

Continued on page 16C

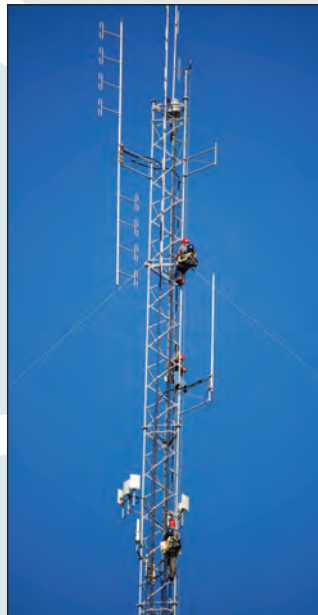


PHOTO BY KEN POPE

Training to climb towers for fiber-optics installation are, from top, Dennis Harrison, Glenn Cunningham and Brannon Horne.



PHOTO BY SHERRI KING

Members of Diverse Power's tower-climbing crew are, clockwise from left, Glenn Cunningham, Steve Rhode, Mike Hammond, Dennis Harrison, Brannon Horne and Brent Bailey.



PHOTO BY GLENN CUNNINGHAM

Diverse Power lineman Brannon Horne climbs a 350-foot-tall tower.

Diverse Power honors employees at 6th Annual Celebration Luncheon

On Dec. 16, 2010, Diverse Power held its 6th Annual Celebration Luncheon to recognize the Diverse Power employees for achievements and milestones met in 2010.

President/CEO Wayne Livingston presented service awards to employees pictured here.

Safety Coordinator Glenn Cunningham also presented certificates of appreciation to the 2010 safety committee members John Andrews, Shawn Bailey, Lisa Bruce, Keith King and Kim Lanier. Wade Hall, Lisa Morman and Cunningham are standing members of the safety committee.

Cunningham recognized Diverse Power for receiving a No Lost Time Award from Georgia Electric Membership

Corporation for one year without an injury involving time away from work in 2010. An award was also received from the National Safety Council for a Perfect Record Award for 212,816 employee hours without injury or illness involving days away from work from June 2009 to June 2010. National Safety Council Perfect Record pins were presented to each employee and director.

“We continue to educate our employees on the hazards of working around high-voltage power lines and keeping in compliance with OSHA and the Department of Transportation standards,” says Livingston. “We are very proud of the dedicated and loyal employees of Diverse Power in their efforts to provide reliable service to the members.”

30 Years of Service



Kathleen Boyd
Assistant to the
President/CEO



Pete Littlefield
Warehouse/
Purchasing



Deborah Tatum
Plant Accountant

25 Years of Service



Luther Beasley
Utility Worker II



Chris Haynes
Senior Field Service
Representative



Randy Lynch
General Foreman

20 Years of Service



Johnny Green
Senior Field Service
Representative

15 Years of Service



Ellis Camp
Lineman

10 Years of Service



Mike Hammond
Line Crew Leader



Jeff King
Staking Technician

Continued on page 16C

5 Years of Service



John Andrews
Lineman



Jody Evans
Auto Mechanic II



Scott Sawyer
Residential Service/Marketing
Coordinator



Joey Webb
Lineman

*Diverse Power
congratulates
these employees
for their years
of service.*

Tower climbing

Continued from page 16A

last fall to teach crew members techniques on climbing and performing hurt-man rescues on the sky-high towers. A contractor previously used by Diverse Power was selected to instruct the new crew on how to remove and install antennas and how to run cable down the towers, according to Cunningham. From the tower, cable is run from site to site to interconnect advanced communications systems to each of Diverse Power's substations. DPI Communications Engineer Jimmy Hutto is responsible for fiber-optic splicing and making connections in the substations and at the towers.

During training, the tower-climbing linemen installed new 450-qmHz antennas and coax on towers at Diverse Power headquarters in LaGrange and at the Mulberry substation.

"This additional equipment will be used to evaluate a new mobile data system using frequencies DPI recently purchased, making mobile data to all DPI vehicles possible," says Pruett. "Mobile data would allow all trucks to access data tools [service orders, e-mails and databases] in the field."

According to Cunningham, the new communications system enables Diverse Power to protect its lines and substations from vulnerability and potential attack.

"The Federal government has determined utilities to be a 'critical infrastructure/key resource,'" he says. "By having our own towers and fiber-optic cable, and operating independently of other sources, it protects our infrastructure from outside attack by hackers and



PHOTO BY GLENN CUNNINGHAM

Dennis Harrison descends a tower during training last fall.

other malevolent sources, thus helping to maintain our reliability."

Cunningham recently returned from a national meeting where representatives from other electric cooperatives were impressed with Diverse Power's undertaking.

"No one there knew of any other electric co-op in the country that's doing this," says Cunningham. "By doing the tower work, the fiber-optics and connectivity all in-house, we are saving the company tens of thousands of dollars. Diverse Power is very likely the only electric cooperative out of more than 900 in the country that is doing this kind of high-rise tower work. This is groundbreaking work for us and proves that we have a multidimensional workforce capable of adapting to the changes in our industry."



Innovation through vision.
Quality through service.

Diverse Power Incorporated

P.O. Box 160
1400 South Davis Road
LaGrange, Georgia 30241
(706) 845-2000
(800) 845-8362
www.diversepower.com
www.arcofadventure.com

Board of Directors

Chairman
Charles Knight

Vice Chairman
Larry Williamson

Secretary
Dr. Bill Couch

Jimmy Bailey
Larry Keith
Harrell Landreth
David Murphy
Roy Tollerson Jr.
Richard Williams

Staff

Wayne Livingston
President/CEO

Kathleen Boyd
Assistant to the President/CEO
Editor of "Trends"

Randy Pruett
Senior Vice President

Wade F. Hall
Senior Vice President

Randy Shepard
Senior Vice President

Ken Pope
Residential Services/Marketing
Coordinator

Scott Sawyer
Marketing Services Coordinator

Customer Service
Wendell Cox - *Manager*

Lisa Bruce
Tanya Jones Cameron
Susan Huckabee
Shelley Johnson
Sherri King
Jackie Woodyard



Touchstone Energy®
Cooperatives

trends

Familiar lightbulb on its way out

By this time next year, the federal government will have turned out the lights on the familiar, A-shaped incandescent bulb that's probably in most of your table lamps and overhead light fixtures.

Starting Jan. 1, 2012, the traditional 100-watt and 150-watt A19 incandescent lightbulb will no longer be sold. A year later, the familiar 75-watt incandescent also will be history. And in 2014, Americans will wave goodbye to their beloved—albeit energy-inefficient—60- and 40-watt A-shaped incandescents.

The result: Most people will switch to more efficient compact fluorescent lightbulbs or to a brand-new, high-efficiency halogen bulb that manufacturers have introduced in response to the "lightbulb law" within the Energy Independence and Security Act of 2007.

You might grumble about the considerably steeper price of the alternative bulbs—in the \$2-per-bulb range, versus the 50-cent incandescent. But you could notice a difference on your electric bill once you make the switch, as CFLs last for around five years and use 75 percent less energy than traditional incandescents, which burn out after about seven months of normal use.

A heads-up: Starting this July, lightbulb packages will carry a Lighting Facts label, which will explain how bright the bulb is, how long it will last and how much energy it will use. Instead of saying how many watts the bulb is, it will give its lumens—a measure of light output.



Energy Efficiency *Tip of the Month*

Ninety percent of the energy it takes to wash clothes is used to heat water. If you wash in cold water, you could save \$40 per year if you have an electric water heater and \$30 annually if you have one powered by natural gas.

—Source: U.S. Department of Energy

Scripture

Psalm 118:1

O give thanks unto the Lord; for he is good: because his mercy endureth for ever.

—KJV